



Regione Calabria



Agenzia Regionale per la Protezione dell' Ambiente della Regione Calabria



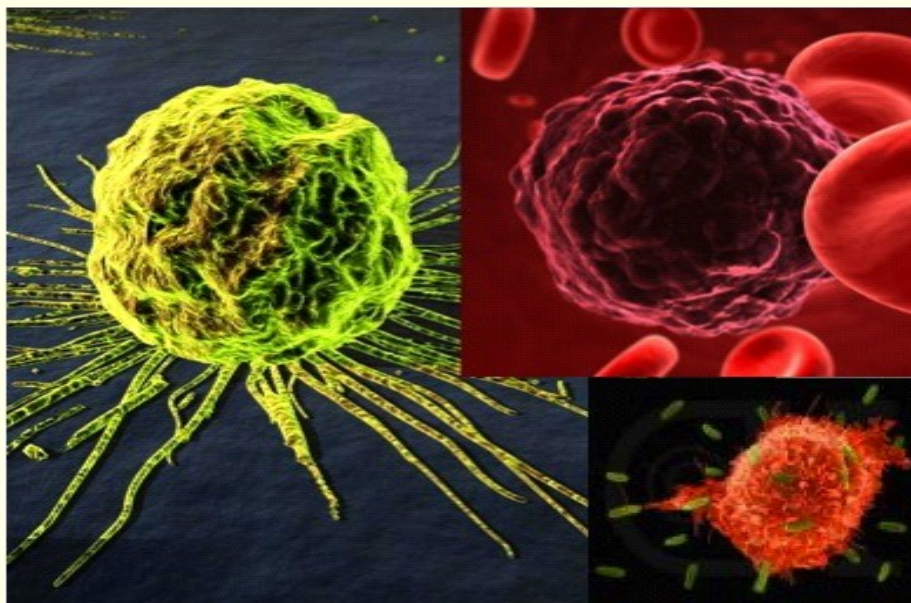
Università "Magna Graecia" Catanzaro



Fondazione Tommaso Campanella



Società Italiana di tossicologia



Società Europea di Tossicologia



FIRST INTERNATIONAL CONFERENCE

EARLY CANCER DETECTION: ENVIRONMENT, BIOMARKERS AND MECHANISMS

MAY 14 -17, 2010

Hotel Villaggio Porto Rhoca

Squillace (Catanzaro)

www.portorhoca.it

In sponsorship with



The application of molecular technologies with minimally intrusive surgical techniques has recently laid the foundation for a revolutionary leap in the science of screening, early diagnosis and target-based therapy for cancer. Fueled by the discovery of cancer-specific biomarkers, and aided by pathological improvements, molecular-based tests are in the not-too-distant future to identify potentially targeted population undergoing environmental risk to develop cancer disease

The aim of the First International Conference on "EARLY CANCER DETECTION: ENVIRONMENT, BIOMARKERS AND MECHANISMS" in Calabria is to bring together scientists that work in different areas of basic and translational cancer research and clinical oncology to discuss the scientific advances in the development of molecular methods for early detection of environmental cancerogenesis.

The scientific sessions will cover epidemiology, environmental risk factors of cancer, mechanisms of carcinogenesis as well as the role of oxidative stress in cancer. The experts will also report on genetic biomarkers of cancer susceptibility and on advanced methodologies to assess the exposure to environmental toxins.

Chairmen

Vincenzo Mollace
Giuseppe Novelli
Corrado Galli
Marina Marinovich

Honorary Meeting Presidents

Enrico Garaci
President of National Institute of Health, Rome, Italy

Francesco Costanzo
Rector of University "Magna Graecia" Catanzaro, Italy

Speakers and Chairmen

Enrico Avvedimento, University Federico II, Naples, Italy

Giancarlo Benelli, Milan, Italy

Ugo Cavallaro, IFOM-IEO Campus, Milan, Italy

Robert Clarke, Georgetown University School of Medicine, Washington, USA

Giovanni Cuda, University of Catanzaro, Italy

Carlo Croce, Ohio State University, USA

Soldano Ferrone, University of Pittsburgh, USA

Carmela Fimognari, University of Bologna, Italy

Corrado Galli, University of Milan, Italy

Patrizia Hrelia, University of Bologna, Italy

Vassiliki Karantza, The Cancer Institute of New Jersey, New Brunswick, USA

Robert Klein, Sloan Kettering Cancer Center, New York, USA

Ciro Isidoro, University of Novara, Italy

Tamara Lah, National Institute of Biology, University of Ljubljana, Slovenia

Francesco Lo Coco, University of "Tor Vergata" Rome, Italy

Lucio Luzzatto, University of Florence, Italy

Marina Marinovitch, University of Milan, Italy

Vincenzo Mollace, University of Catanzaro, Italy

Giovanni Morrone, University of Catanzaro, Italy

Giuseppe Novelli, University of "Tor Vergata", Rome, Italy

Domenico Palli, Cancer Prevention and Research Institute (ISPO), Florence, Italy

Nicola Perrotti, University of Catanzaro, Italy

Ubaldo Prati, "Tommaso Campanella Foundation", Catanzaro, Italy

Franco Roperto, University "Federico II", Naples, Italy

Konrad Rydzynski, ECNIS, Lodz, Poland

Daniela Salvemini, Duke University Medical Center, USA

Antonella Sgura, University "Roma 3", Rome, Italy

Daret St. Clare, University of Kentucky, USA

Morando Soffritti, Director Istituto Ramazzini, Bologna, Italy

Piersandro Tagliaferri, University of Catanzaro, Italy

Francesco Tassone, University of Catanzaro, Italy

Kenneth Tew, Medical University of South Carolina, SC, USA

Francesco Trapasso, University of Catanzaro, Italy

PROGRAM

FRIDAY, 14 MAY 2010

15:00 REGISTRATION

17:30-18:00 WELCOME ADDRESSES

18:00-18:30 CONFERENCE INTRODUCTION: Enrico Garaci

Francesco Costanzo

Vincenzo Mollace

Ubaldo Prati

18:30-19:30 OPENING LECTURES: Corrado Galli: Integrated environmental risk characterization

Daniela Salvemini: The role of free radical species in cancer-related hyperalgesia

19:30 WELCOME COCKTAIL— DINNER

SATURDAY, 15 MAY

9:00-10:30 Session 1: ENVIRONMENTAL RISK FACTORS OF CANCER

Chairmen: Marinovich M., Ando' S.

- **Konrad Ryzdzynski:** "The effect of dietary habits and genetic polymorphisms on PAH metabolite excretion and DNA damage"
- **Morando Soffritti:** "The contribute of long-term carcinogenicity bioassay on cancer primary prevention"
- **Domenico Palli:** "Molecular and Nutritional Epidemiology"
- **Patrizia Hrelia:** "Biomarkers in health risk assessment by environmental pollution".

10:30-11:00 Coffee break

11:00-12:30 Session 2: CANCER GENETICS AND GENETIC BIOMARKERS

Chairmen: Novelli G., Fimognari C.

- **Giuseppe Novelli:** "Clinical Utility and Validity of Genomic Biomarkers"
- **Francesco LoCoco:** "Early detection of relapse in leukemia"
- **Antonella Sgura:** "Telomers and telomerase as cancer biomarkers"
- **Benelli Giancarlo:** "Gene target therapies in oncology, economics for new reimbursement approaches"

12:30-13:00 POSTER SET UP

13:00-17:00 POSTER VIEWING LUNCH AVAILABLE

17:00-19:00 ORAL COMMUNICATIONS

20:30-23:30 DINNER -ENTERTAINMENT

SUNDAY, 16 MAY 2010

9:00-10:30 Session 3: MOLECULAR MECHANISM OF CARCINOGENESIS

Chairmen: Isidoro C., Trapasso

- **Lucio Luzzato:** "Environmental agents, somatic mutations and cancer"
- **Vassiliki Karantza:** "Role of autophagy in mammary tumorigenesis"
- **Ugo Cavallaro:** "Adhesion molecules and receptor tyrosine kinases: a novel interplay involved in cancer progression"
- **Nicola Perrotti:** "Role of insulin in carcinogenesis"

10:30-11:00 Coffee break

11:00-12:30 Session 4: OXIDATIVE STRESS AND CANCER

Chairmen: Salvemini D., Mollace V

- **Daret St. Clair:** "Regulating the Regulator: MnSOD and the Warburg's Effect"
- **Kenneth Tew:** " Glutathione S-Transferase P (GSTP) and S-Glutathionylation in Redox Homeostasis and cell Signaling Pathways"
- **Robert Clarke:** "Endoplasmic reticulum stress, the unfolded protein response, and endocrine sponsiveness in breast cancer"
- **Enrico Avvedimento:** "DNA methylation is a "scar" of homologous repaired DNA damage"

12:30-15:00 POSTER VIEWING, LUNCH

15:00-19:00 PACKAGE TOUR

20:30-22:30 GALA DINNER

MONDAY, 17 MAY 2010

9:30 -11:00 Session 5: CANCER BIOMARKERS

Chairmen: Cuda G., Morrone G.,

- **Giovanni Morrone** "Laukemia Stem Cells: Biology, Biomarkers, Models and Molecular Targets"
- **Soldano Ferrone:** "The clinical significance of CSPG4 as a prognostic biomarker in chordoma"
- **Tamara Lah:** "Resveratrol reduces proliferation and the invasive growth of human glioblastoma initiating cells"
- **Robert Klein:** "SNPs, biomarkers, and prostate cancer."

11:00- 11:30 Coffee break

11:30-13:00 Session 6: EARLY CANCER RISK ASSESSMENT

Chairmen: Tassone P., Tagliaferri P

- **Vincenzo Mollace:** "Environmental risk assessment: state of the art"
- **Franco Roperto :** "Cancer risk assessment and food safety"
- **Giovanni Cuda:** " Serum proteomics for the identification of biomarkers foe early diagnosis in hereditary cancer"

Concluding lecture

Carlo Croce: "Causes and Consequences of microRNA Dysregulation in Cancer"

13:30 -14.30 LUNCH

CONCLUDING REMARKS

DEPARTURE

Scientific Committee

Stefano Alcaro, Cz
Rosaria Arcone, Cz
Marco Colasanti, Rm
Carmen Colica, Cz
Gianni Cuda, Cz
Maria Tiziana Corasaniti, Cz
Massimo Fresta, Cz
Corrado Galli, Mi
Michelangelo Iannone, Cz
Ciro Isidoro, Nv
Elzbieta Janda, Cz
Natalia Malara, Cz
Marina Marinovich, Mi
Vincenzo Mollace, Cz
Giovanni Morrone, Cz
Carolina Muscoli, Rm
Franco Nicolace, Cz
Giuseppe Novelli, Rm
Ubaldo Prati, Cz
Antonio Procopio, Cz
Domenicantonio Rotiroti, Cz
Daniela Salvemini, St. Louis
Antonio Scalzo, Cz
Piersandro Tagliaferri, Cz
Pierfrancesco Tassone, Cz
Francesco Trapasso, Cz

Organizing Secretary

ARPACal Via Lungomare, Loc.tà Mosca Catanzaro
Tel. 0961. 732500 Fax 0961. 732598
sedecentrale@arpacal.it
ecm@arpacal.it

Press Office

ARPACal Via Lungomare, Loc.tà Mosca Catanzaro
0961. 732509
ufficio stampa@arpacal.it
web@arpacal.it